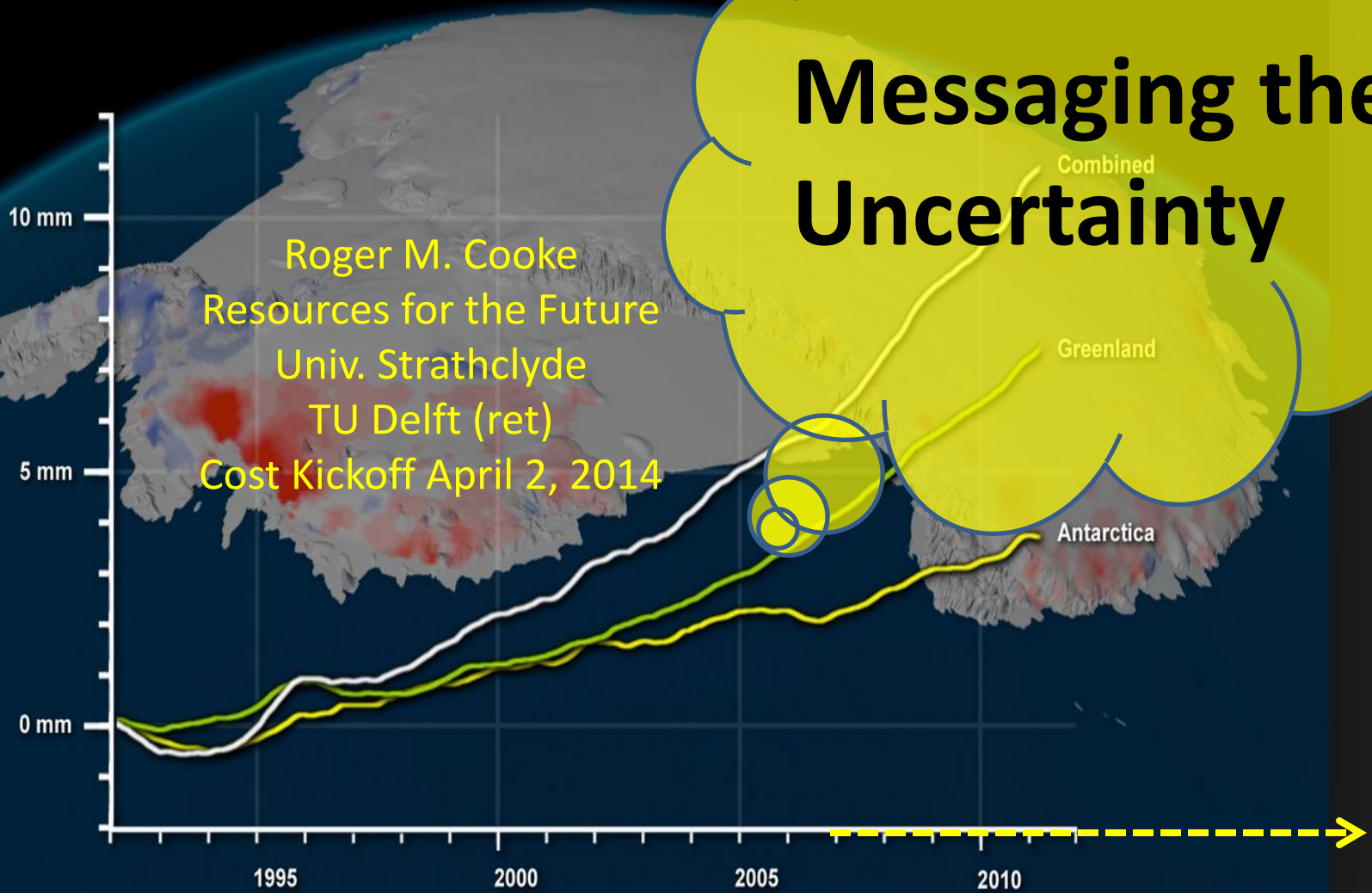


# False Certainty or False Uncertainty

Ice Sheet Contribution to Global Sea Level



Roger M. Cooke  
Resources for the Future  
Univ. Strathclyde  
TU Delft (ret)  
Cost Kickoff April 2, 2014

Messaging the  
Uncertainty

Combined

Greenland

Antarctica

# Earth near climate 'tipping points,' NASA says

## Small temperature increases now can have big impact, study concludes

- U.S. News**
- Crime & Punishment
- U.S. Life
- U.S. Security
- Education
- Environment
- Race & Ethnicity
- Charity News
- Only on MSNBC.com
- WP.com Highlights
- Peculiar Postings

- Video**
- U.S. News**
- Politics**
- World News**
- Business**
- Sports**
- Entertainment**
- Health**



Australian Antarctic Division via Reuters

Antarctica has shed icebergs like these for eons, but scientists say the continent is getting warmer due to human emissions of greenhouse gases. A new NASA-funded study says the West Antarctic ice sheet is one particularly vulnerable area.

# John Shimkus, GOP Rep. Who Denies Climate Change On Religious Grounds, Could Lead House Environmental Policy


The Huffington Post | Nick Wing  

First Posted: 11/13/10 11:52 AM ET | Updated: 05/25/11 07:10 PM ET 

React > [Important](#) [Funny](#) [Typical](#) [Scary](#) [Outrageous](#) [Amazing](#) [Innovative](#) [Finally](#)

Follow > [Climate Change](#) , [Gop](#) , [Gop Climate Change](#) , [House Committee On Energy And Commerce](#) , [John Shimkus](#) , [Shimkus](#) , [Shimkus Climate Change](#) , [Shimkus Climate Change God](#) , [Shimkus Energy And Commerce](#) , [Shimkus God Climate Change](#) , [Politics News](#)

## SHARE THIS STORY


 Like 10,973 people like this. Sign Up to see what your friends like.

2,597

0

4

0

 Share

 Tweet

 Email

 g+1



The highest-ranking House official in charge of environmental and energy policy may soon be a

Republican legislator who denies climate change on the grounds of his belief that nothing bad can come of the Earth unless it is preordained by God.

Rep. John Shimkus (R-Ill.), a member of the House Committee on Energy and Commerce since 1997, submitted a letter to his colleagues earlier this week asking for their blessing in his campaign to assume the gavel when Republicans take control of the chamber.

Such a possibility is likely to be particularly worrying to climate change scientists and their supporters, especially considering a specific incident in which Shimkus announced he would reject an agreement from the U.S. climate science community that says "only God can 'destroy this Earth.'"

The Toronto Star relays the entire exchange, which took place during a 2009 subcommittee hearing:

Others prepare for Climate Change

**NOAH'S ARK  
BEING REBUILT  
HERE!**



An aerial photograph showing a coastal area that has been severely flooded. The water is a murky brown color, and it has inundated large areas of land. Several houses with blue roofs and white walls are visible, some partially submerged. There are also palm trees and other vegetation scattered throughout the area. The overall scene depicts significant damage and flooding.

# Surging Seas

**Sea level rise, storms & global warming's  
threat to the US coast**

**A Climate Central Report  
March 14, 2012**

## Executive Summary

Global warming has raised sea level about 8 inches since 1880, and the rate of rise is accelerating. **Scientists expect 20 to 80 more inches this century,** a lot depending upon how much more heat-trapping pollution humanity puts into the sky. This study makes mid-range projections of 1-8 inches by 2030, and 4-19 inches by 2050, depending upon location across the contiguous 48 states.

# Guidance Note for Lead Authors of the IPCC Fifth Assessment Report on Consistent Treatment of Uncertainties

**IPCC Cross-Working Group Meeting on Consistent Treatment of Uncertainties**  
**Jasper Ridge, CA, USA**  
**6-7 July 2010**

Core Writing Team:

Michael D. Mastrandrea, Christopher B. Field, Thomas F. Stocker,  
Ottmar Edenhofer, Kristie L. Ebi, David J. Frame, Hermann Held, Elmar Kriegler,  
Katharine J. Mach, Patrick R. Matschoss, Gian-Kasper Plattner, Gary W. Yohe,  
and Francis W. Zwiers



The Guidance Note for Lead Authors of the IPCC Fifth Assessment Report on Consistent Treatment of Uncertainties is the agreed product of the IPCC Cross-Working Group Meeting on Consistent Treatment of Uncertainties.

This meeting was agreed in advance as part of the IPCC workplan.  
At its 32nd session, the IPCC Panel urged the implementation of this Guidance Note.

# IPCC's Calibrated Language

## High or Very confidence:

US National Research Council 2010 report *Advancing the Science of Climate Change*  
([http://www.nap.edu/catalog.php?record\\_id=12782](http://www.nap.edu/catalog.php?record_id=12782))

1. Earth is warming
2. Most of the warming over the last several decades can be attributed to human activities
3. Natural climate variability ... cannot explain or offset the long-term warming trend.
4. Global warming is closely associated with a broad spectrum of other changes,
5. Human-induced climate change and its impacts will continue for many decades,
6. The ultimate magnitude of climate change and the severity of its impacts depend strongly on the actions that human societies take to respond to these risks.

High confidence = “ $\geq 8$  out of 10”

*High confidence in 1 &*

*High confidence in 2 & .....*

*High confidence in 6*

*= High Confidence in 1&2&3&4&5&6 ????????*

*IF each has probability 0.8 of being true,  
probability of ALL  $\in [0, 0.8]$*



# Conditional or joint probability???

**High Confidence: Earth is warming**

**High Confidence: Most of the warming over the last several decades can be attributed to human activities**

= High confidence: “Given Earth is warming, humans caused it”

OR

= High confidence “Earth is warming AND humans caused it”

High Confidence (condition) × High Confidence(consequence) = ?

# 1977: Artificial Intelligence turns from chess to science

E.A. Feigenbaum (1977) "The Art of Artificial Intelligence"

The "Grand Masters" don't reason probabilistically

Fuzziness,

Imprecision,

Certainty factors,

Degree of possibility,

Belief functions,

Non-monotonic reasoning,

Random sets,

The fuzzy uncertainty of  $A \& B \dots \& E$  = minimum of their fuzzy uncertainties

**So, if**

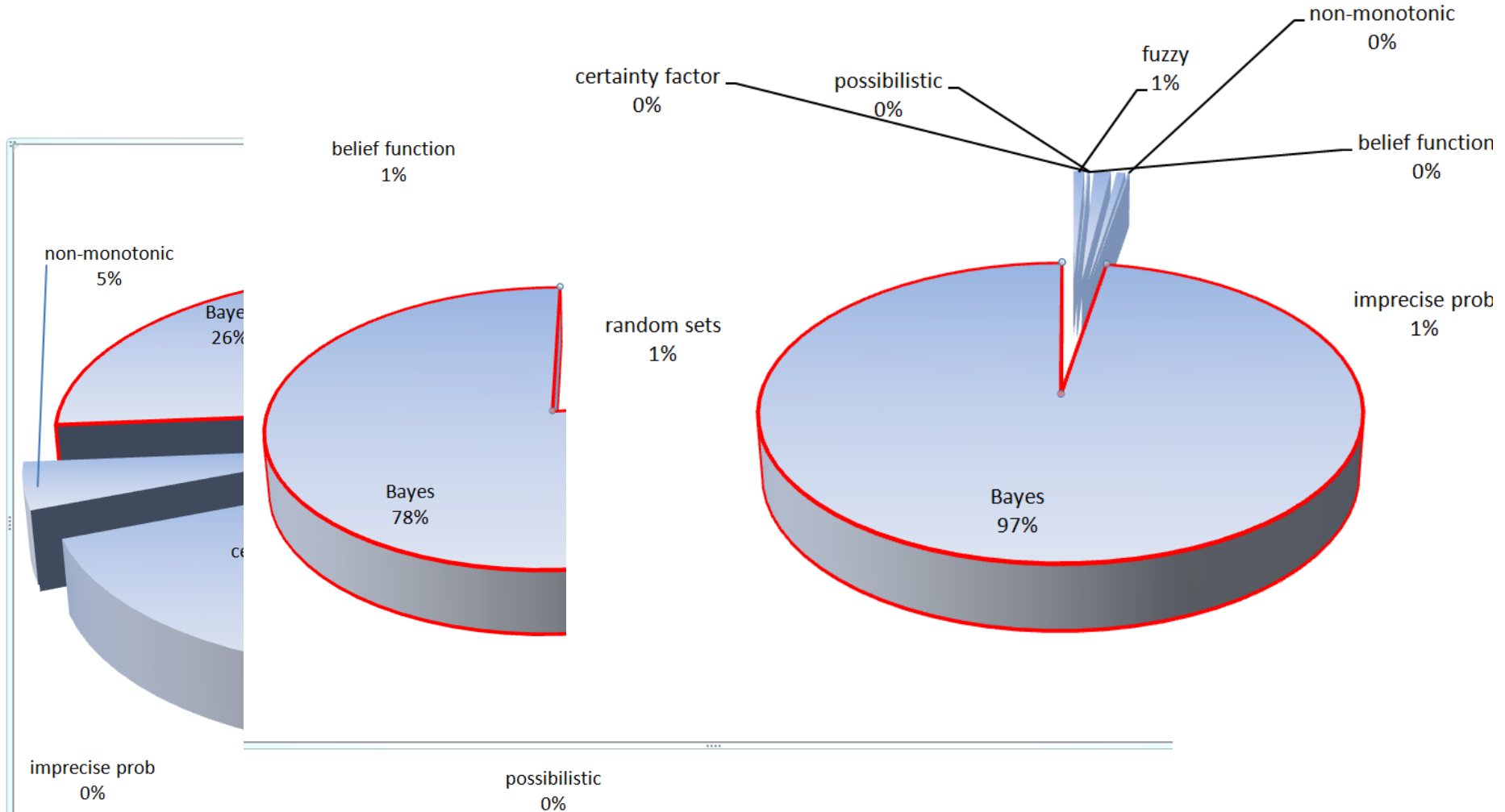
fuzzy uncert'y "**Quincy is a man**" =  $\frac{1}{2}$  = fuzzy Uncert'y "**Quincy is a woman**"

Then fuzzy uncert'y "**Quincy is a man AND a woman**" =  $\frac{1}{2}$ .

# Artificial Intelligence: UAI Proceedings digitized 1985 – 2012

word count

2012



Current flavor of the month.....

# DEEP UNCERTAINTY

*"In fact, the climate change debate is characterized by deep uncertainty, which results from factors such as **lack of information, disagreement** about what is known or even knowable, **linguistic imprecision, statistical variation, measurement error, approximation, subjective judgment, and disagreement about structural models**, among others (see Moss and Schneider, 2000)." U.S. Senate Committee on Commerce, Science and Transportation Hearing on "The Case for Climate*

**Deep Uncertainty defies  
quantification because.....**

# Deep uncertainty is **Knightian**

Frank Knight, Risk, Uncertainty and Profit, 1921

- . "Uncertainty", [in contrast to risk], concerns "partial knowledge" for which "the conception of an objectively measurable probability or chance is simply inapplicable"

...but read further....

*"We can also employ the terms '**objective**' and '**subjective**' probability to designate the **risk** and **uncertainty** respectively, as these expressions are already in general use with a signification akin to that proposed"*

# The problem of communicating uncertainty about CC is:

The Communicators don't understand uncertainty

No blame: IPCC synthesizes 'what's out there'

We, not IPCC, must raise the bar

# The bar needs raising

- Deniers use uncertainty to shift the proof burden
- Alarmists use uncertainty to frighten us into precipitous action
- No alternative to **science-based UQ**
- (Forthcoming IPCC report is better)



# Foundations 101

Ramsey 1926, Savage (Ogashevit) 1954

If John prefers

*\$10,000 if France wins...; \$1000 otherwise*

to

*\$10,000 if USA wns...; \$1000 otherwise,*

and

*\$10,000 if France OR Belgium win...; \$1000 otherwise*

is preferred to

*\$10,000 if USA OR Belgium win...; \$1000 otherwise.*

etc

**THEN (+continuity, dominance axioms)**

**John's partial belief is uniquely  
represented as a (subjective)  
probability measure.**





# Quantifying Uncertainty: Structured Expert Judgment

European Commission

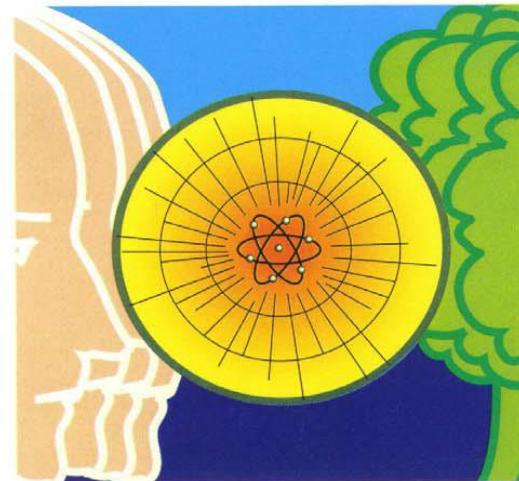
Community research



*Project report*

*Nuclear science and technology*

## Procedures guide for structured expert judgment



EURATOM

# Anno 2013 over 100 professional applications

Partial List: Louis Goossens, Willy Aspinall, Mark Burgman, Tim Bedford, Anca Hanea, Abby Colson, Dorota Kurowicka, Oswaldo Morales, Marion Whitmann, John Rothlisberger, Bernd Kraan, John Evans, Juoni Tuomisto, Margret Palmer, David Lodge, Karen Slijkhjiis, Martijn Frijters, Tom Mazzuchi, Eric Jager, Fred Harper, Jan van Noortwijk, Nicole van Elst, Bram Meima, Arno Willems

Nuclear	EU, USNRC
Aerospace	ESTEC, NASA
Chemical Process	VROM
Dose Response	VROM
Environmental Transport	EU, USNRC, VROM
Banking / Investment	SHELL, AMS Optie
Volcanoes	UK, EU
Aeronautics	VROM, AIRBUS, BA
Project mngt	Robert Woods Johnson
Public Health	Health Canada
Civil Infrastructure	UK, NL, EPA
Invasive Species	NOAA
Ice Sheets	RL Foundation, UK

# “Uncertainty from random sampling ...omits important sources of uncertainty” NRC(2003)

All cause mortality, percent increase per 1  $\mu\text{g}/\text{m}^3$  increase in  $\text{PM}_{2.5}$

	Amer Cancer Soc. (reanal.)	Six Cities Study (reanal.)	Harvard Kuwait, Equal weights (US)	Harvard Kuwait, Performance weights (US)
Ratio 95%/50%	<div style="border: 1px solid black; padding: 5px;"> <p style="text-align: center;"><b>False Certainty</b></p> <p style="text-align: center;">0.44 <b>2.5</b> 1.12</p> </div>		<div style="border: 1px solid black; padding: 5px; background-color: #e0e0e0;"> <p style="text-align: center;"><b>False Uncertainty</b></p> <p style="text-align: center; color: red; font-size: 2em;"><b>257</b></p> </div>	<div style="border: 1px solid black; padding: 5px; background-color: #ffff00;"> <p style="text-align: center;"><b>Goldilocks Uncertainty</b></p> <p style="text-align: center; color: red; font-size: 2em;"><b>63</b></p> </div>





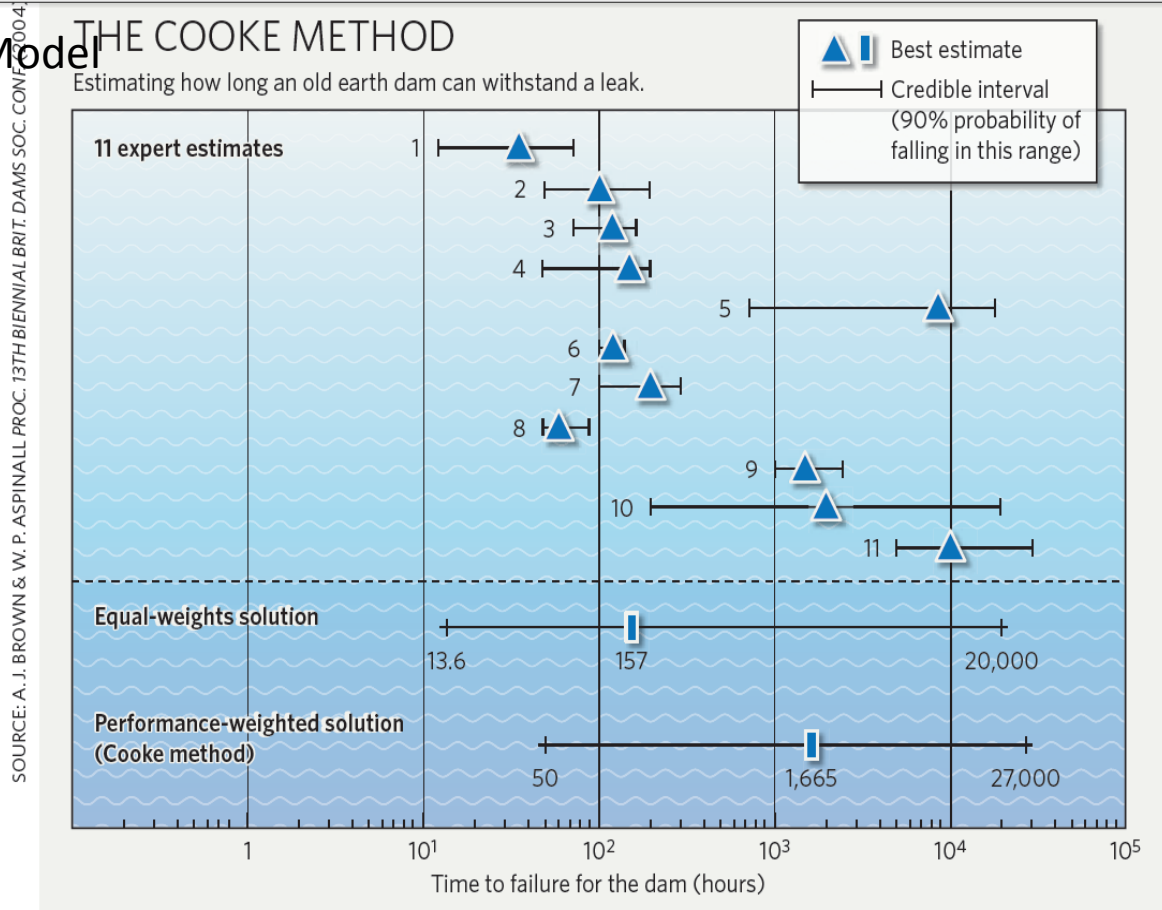


# OPINION

## A route to more tractable expert advice

There are mathematically advanced ways to weigh and pool scientific advice. They should be used more to quantify uncertainty and improve decision-making, says **Willy Aspinall**.

### The Classical Model



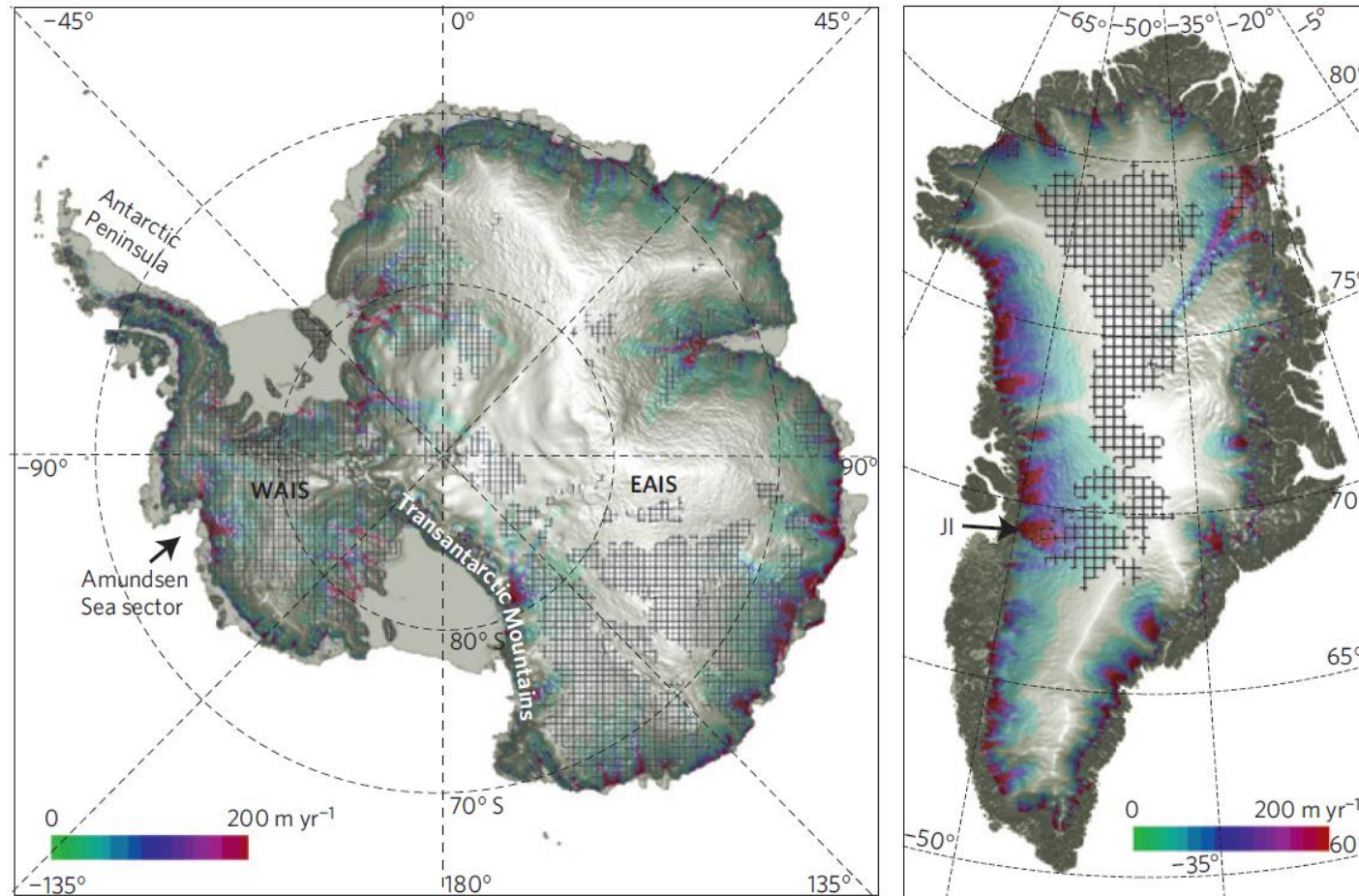
SOURCE: A. J. BROWN & W. P. ASPINALL, PROC. 13TH BIENNIAL BRIT. DAMS SOC. CONF. 2004

**Figure 1 | Estimates from 11 experts of the time-to-failure of an earth dam, once the core starts to leak.** The performance-weighted best judgement is about 70 days — much longer than the equal-weights solution of about a week.

# Expert elicitation 2010, 2012, 2012a (J.Bamber and W. Aspinall) Dependence Elicitation Dec. 18, 19, 2012, (JB, WA, RC)

ARTICLES

NATURE CLIMATE CHANGE DOI:10.1038/NCLIMATE1778



**Figure 1 |** Shade-relief maps of Antarctica and Greenland showing regions of enhanced flow (in colour) and areas of the ice sheets grounded below sea level (hatched). Also shown are regions discussed in the text. JI refers to Jakobshavn Isbrae, a glacier that doubled in velocity during the late 1990s<sup>7</sup>.

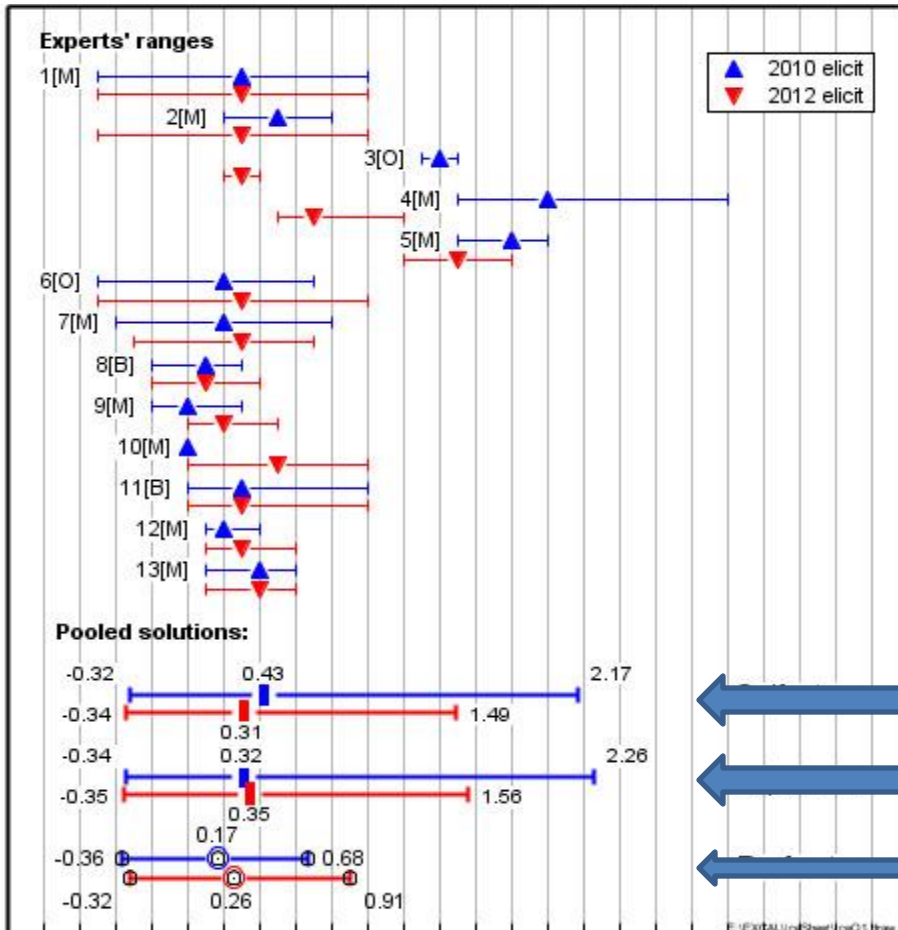


EXPERT JUDGEMENT ASSESSMENT

# Quantifying uncertainty on thin ice

The contribution of ice sheets to sea-level rise still has large uncertainties that are yet to be quantified.

R. M. Cooke



Self – weights

Equal weights

Performance based weights

20<sup>th</sup> Century combined Ice Sheet contribution to SLR [mm/yr]

EXPERT JUDGEMENT ASSESSMENT

# Quantifying uncertainty on thin ice

The contribution of ice sheets to sea-level rise still has large uncertainties that are yet to be quantified.

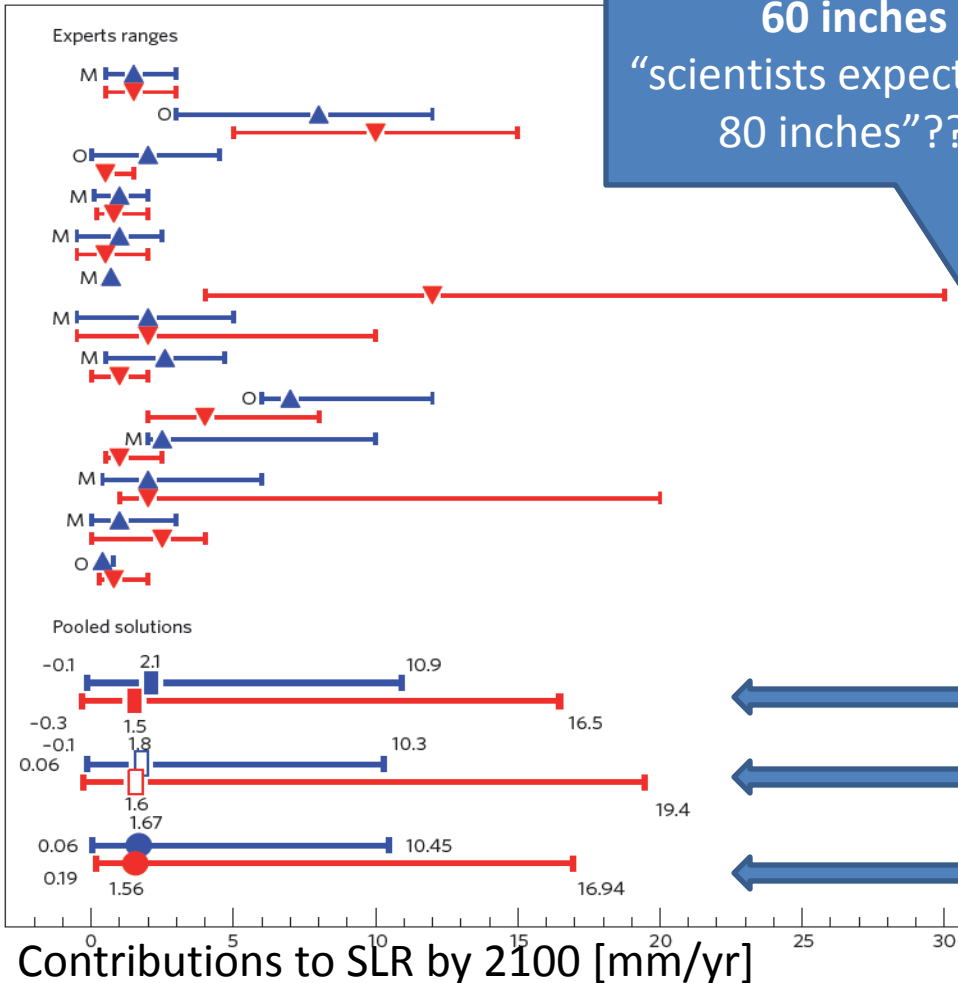
R. M. Cooke

60 inches  
 “scientists expect 20 to 80 inches”???

— 2010  
 — 2012

O = Observationalist  
 M = Modeler

Self – weights  
 Equal weights  
 Performance based weights



# What Else?



## WIRED MAGAZINE: 17.03

TECH BIZ : IT 

# Recipe for Disaster: The Formula That Killed Wall Street

By Felix Salmon  02.23.09

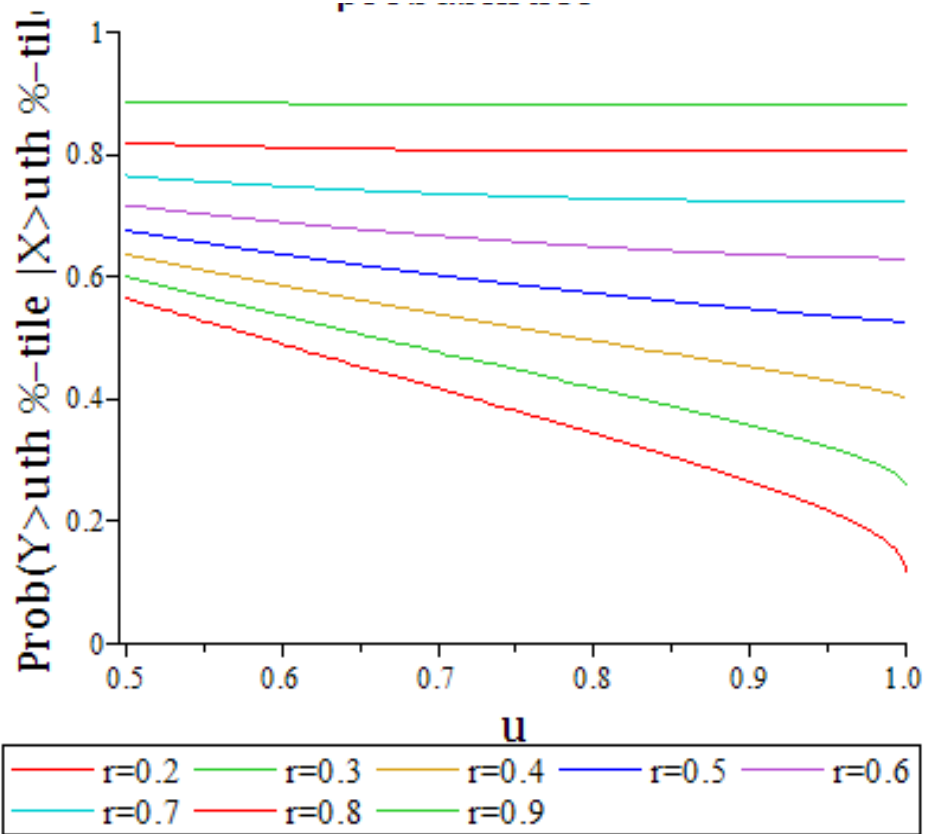
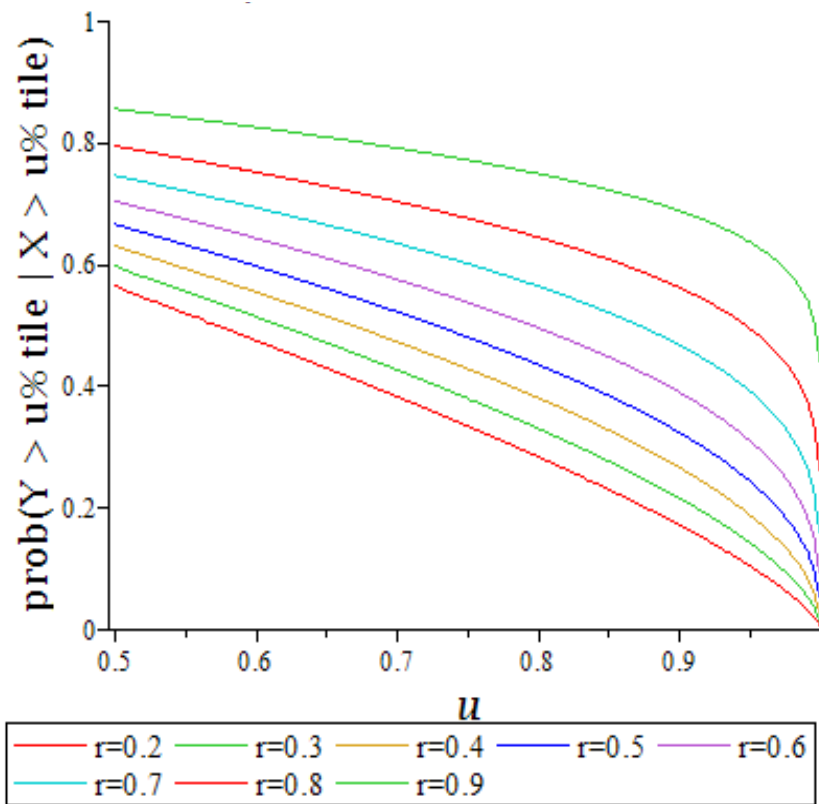
# Tail (in)dependence: Normal Copula

“Suppose X is really bad, what is the probability that also Y is really bad?”

## Conditional exceedance probabilities as function of correlation

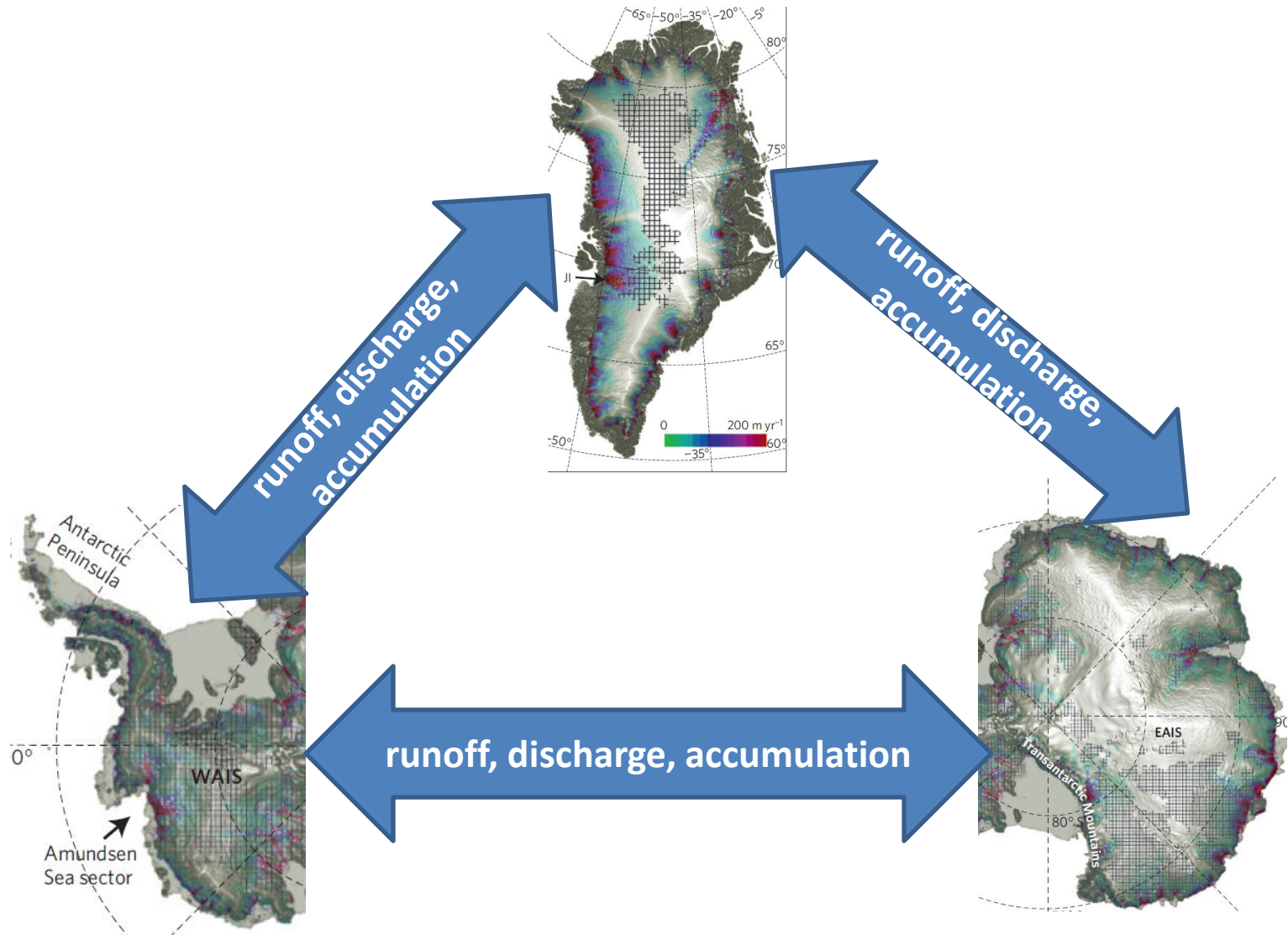
Normal copula

Reverse Clayton Copula



# Dependence in Ice Sheet Uncertainty?

Contribution to SLR / yr = Runoff + Discharge - Accumulation



# “Uncertainty effects”:

		Ice sheet contribution to SLR in 2100 @ 3C warming [mm]				
Decision maker (expert combination)		Mean	StDev	5%-ile	50%-ile	95%-ile
	Performance weights, Independent	335	200	71	307	719
	Performance weights, Normal copulae	337	216	64	301	749
	Performance weights, Tail Dependent	338	229	71	292	785
	Equal weights, Independent	615	270	238	581	1120

**Goldilocks Uncertainty**

**False Uncertainty**

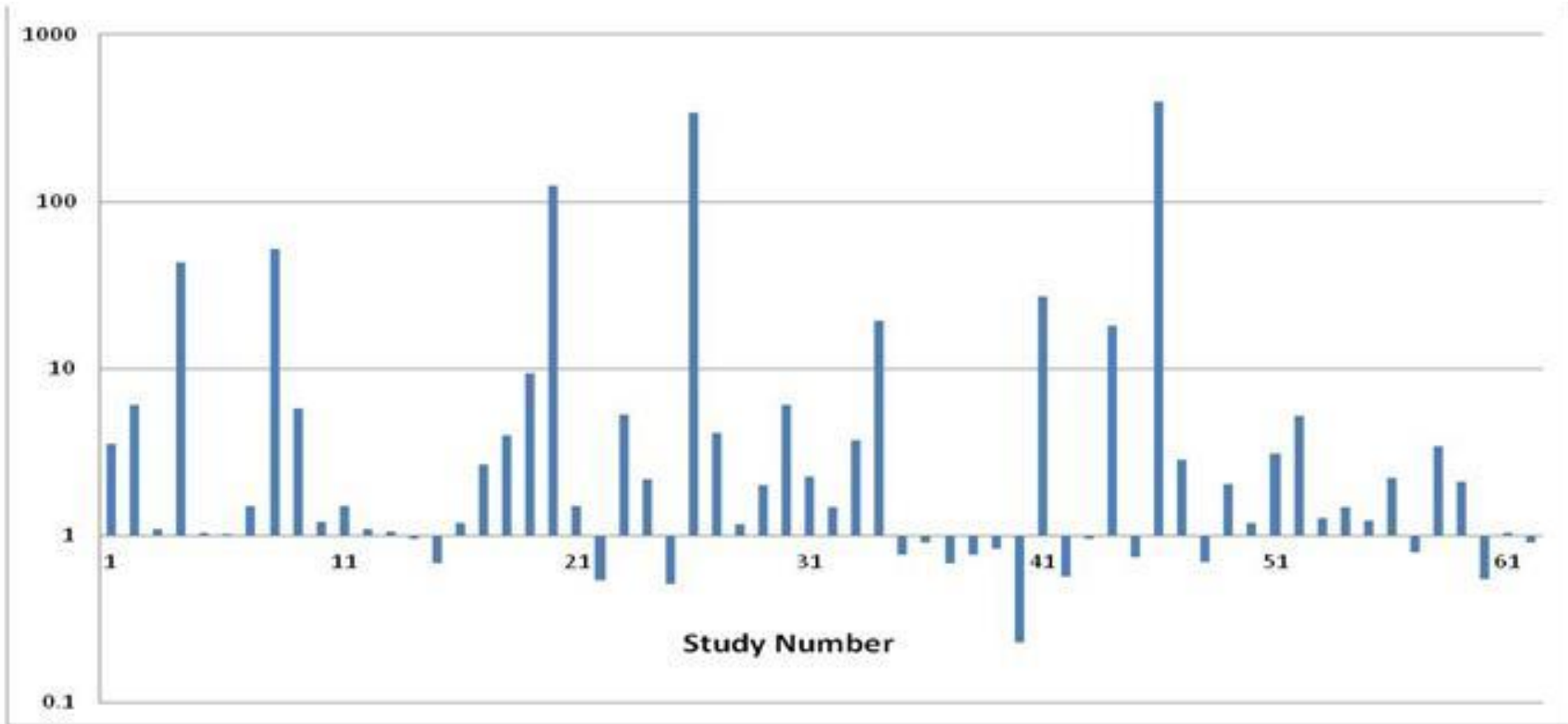
# What Else?





# Outs of Sample Validation: of Classical Model

62 studies, per study: geomeans of comparisons of PW/EW combined score ratios. Eggstaff, Mazzuchi, Sarkani (2013 RESS);



# Conclusions

Science based  
uncertainty  
quantification  
IS possible

The uncertainty  
communicators  
need to understand  
uncertainty

